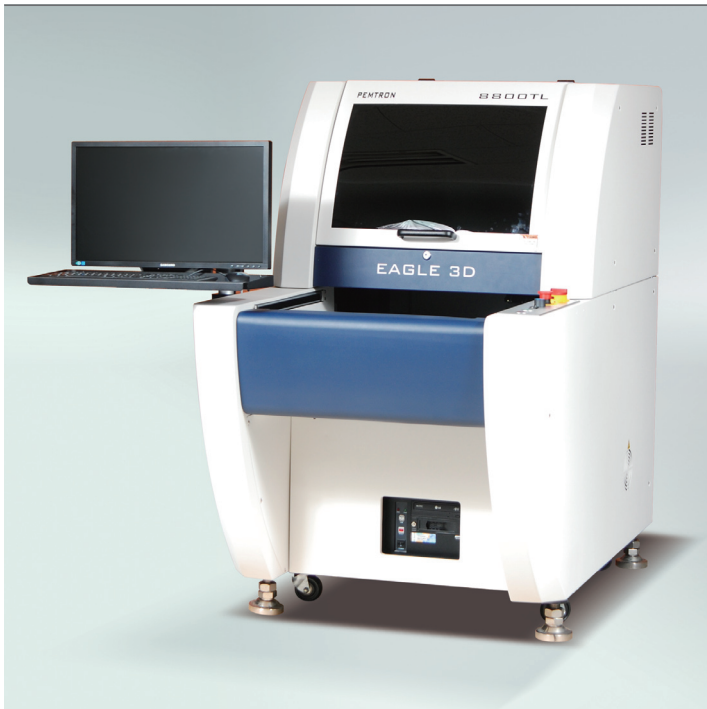


Offline 3D-AOI

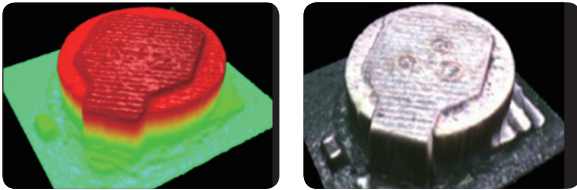


Offline system

Model	EAGLE 3D-8800TL		
Board Size	Max. 510 x 465mm		
Resolution	10um	15um	18um
Camera	4M		
Inspection Speed	9.1cm ² /sec	20.5cm ² /sec	29.5cm ² /sec
FOV (Field of View)	20 x 20 mm	30 x 30 mm	36 x 36 mm
Conveyor system	SMEMA Standard, Auto Adjustable		
Electrical requirements	AC 220V ±10%, 50/60Hz		
Power Consumption	2.5KW (11.0A Max @ 220 AC)		
Operation Condition	Temperature: 0 ~ 40°C, humidity: 30~80% RH		
Control Method	Windows 7, 64 bit (PC based Control)		
Monitor	24" LED Panel		

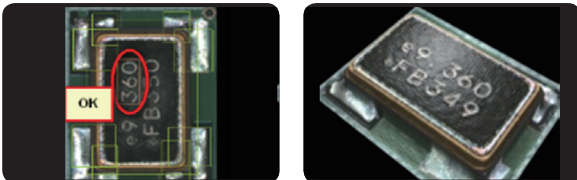
Shadow Free 3D Technology

Eliminates shadow issues on highly populated PCBs and tall components



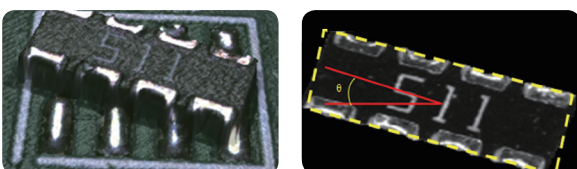
Optical Character Recognition

Recognizes component part characters by using color and pattern algorithms. Ability to add & modify OCR font to optimize inspection condition.



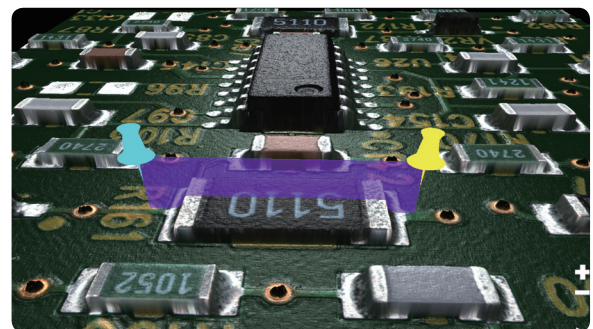
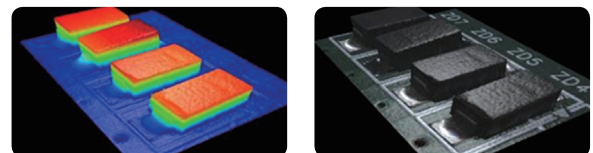
Tilt & Rotate Measurement

Advanced algorithms can extract, detect and differentiate diverse component body patterns automatically.



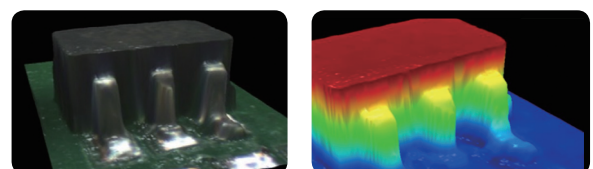
3D Solder & Height Measurement

Using our advanced 3D technology, the EAGLE is able to take inspection to levels that are limited by conventional 2D systems. Adding solder height, volume and part co-planarity inspection provides enhanced defect detection capabilities.



3D Lead Inspection

3D measurement algorithms enable the EAGLE to measure lead height and volume of solder proving full-high quality 3D images.



Technology and Features

Advanced High Speed Inspection and Measurement Technology

Shadowless Phase Measuring Profilometry

EAGLES 4MP 8 Projector 3D AOI inspects 100% of the PCB in 2D and 3D. Combining the 2 technologies gives a complete optical inspection of a PCB shadow free and low false calls maintaining a high flexibility in system functionality.

Moiré Technology



Over 10 years of integrating Phase Measuring Profilometry Technology into our TROI Solder Paste Inspection Systems has proven the most advanced 3D technology available.

- 8 Projection + Three stage lighting
- 2D and 3D simultaneous inspection algorithms
- Telecentric Lens offers higher accuracy and detection
- High Speed CPU and Image Processing
- User Friendly Graphical Interface
- Built in Library Management System
- Offline Real Time Debug Station (Optional)

High Speed Inspection Technology

EAGLES High Speed Option inspects in 40.5cm sq. per sec. by utilizing an advanced network of more robust CPU, controller boards and our proprietary developed 9MP 15um 150fps camera with telecentric lens.



High Component Inspection Technology

EAGLES optional new 10-Way Projection Technology offers an industry first 25mm component height inspection in 100% 3D.

