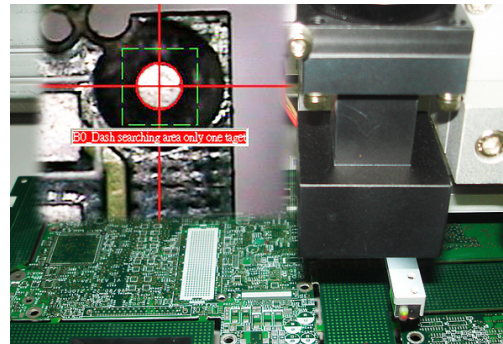


EM-5700N PCB SEPARATOR CUT MACHINE



Specification

01. X、 Y cutting speed : 0~100mm/s
02. Repeat precision of the Machine set : $\pm 0.01\text{mm}$
03. X、 Y、 Z driving method : AC servomotor
04. X、 Y、 Z control method : Use the industrial IPC and PC
05. Human-machine operation and data storage : PC system
06. Cut the precision : $\pm 0.1\text{mm}$
07. Rotational speed of the spindle : Max.60000rpm
08. Host voltage : 220V 1 ϕ 50 / 60HZ
09. Air pressure supply : 4.5kg/cm² above
10. Power consumption : 3KVA
11. Dust collection method : Lower dust collection
12. Voltage of the dust collector : 220V (380V) 3 ϕ
13. Lower dust collection size : 665*635*1610mm

The Best Solution for PCB Depaneling

- Avoids problems such as tin break and damage to the component caused by manually bending a plate
- Avoids the stress produced mechanically by using punch or bending
- Suitable for cutting of circle, arc and line of a finished plate...