

# Valor IoT Manufacturing Analytics Delivering Product Performance Intelligence In a Global Value Chain



Valor IoT Manufacturing Analytics is a big-data business-intelligence analytic platform for higher manufacturing performance, by providing greater visibility into equipment, products, and supply-chain performance. It can easily identify and monitor production and supplier issues, prevent costly recalls, spot emerging trends, and solve quality problems faster.

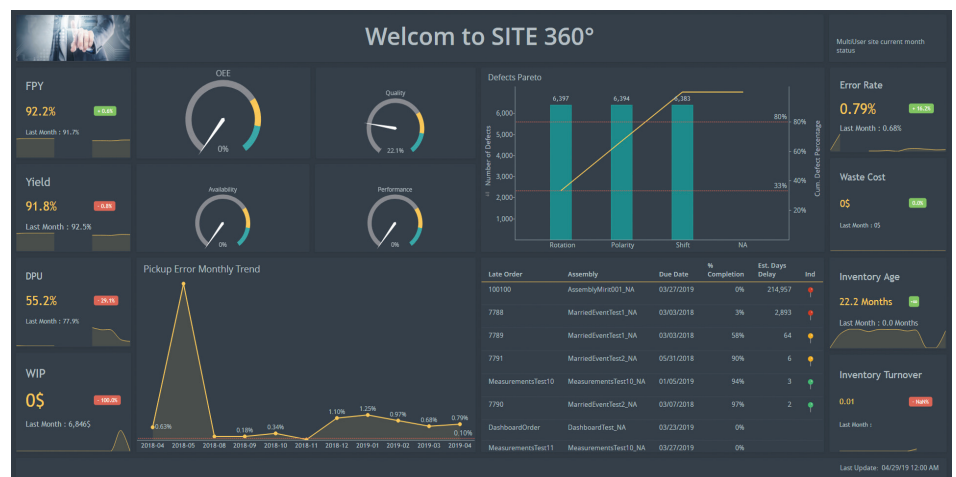
## Overview

Valor® IoT Manufacturing Analytics is designed specifically for the PCB manufacturing industry, providing PCB manufacturing executives, line managers, and manufacturing engineers with crucial information needed to deliver quality products on time. With Valor IoT Manufacturing Analytics, you can eliminate waste, while improving asset utilization, first-pass yield, and defects per million opportunities (DPMO) quickly and intuitively. It starts by providing access to rich data sources from the Valor shop-floor modules and then combines data for high-value intelligence, using a tight integration with other Valor solutions in your factory. It includes information on all manufacturing sites, lines, and machine performance and utilization. Calculated OEE dashboards, drill-down capabilities, and trend analysis is also included. Dashboards, alerts, and automated reports make it easy to analyze total traceability, quality, and equipment/material utilization.

Use Valor IoT Manufacturing Analytics to identify which problems to solve and which orders solve them.

## Benefits

- Improves asset management with accurate, real-time utilization and overall equipment effectiveness (OEE)
- Helps capture and investigate complete material and process traceability data for PCBs and assemblies using big-data, high-availability storage
- Optimizes operation and labor by measuring and analyzing how resources are spent, and tracking WIP in real-time
- Ensures quality and drives improvement by identifying and analyzing processes defects and material and process failures
- Increases design-to-manufacturing efficiency by detecting factors affecting yield and areas for improvement



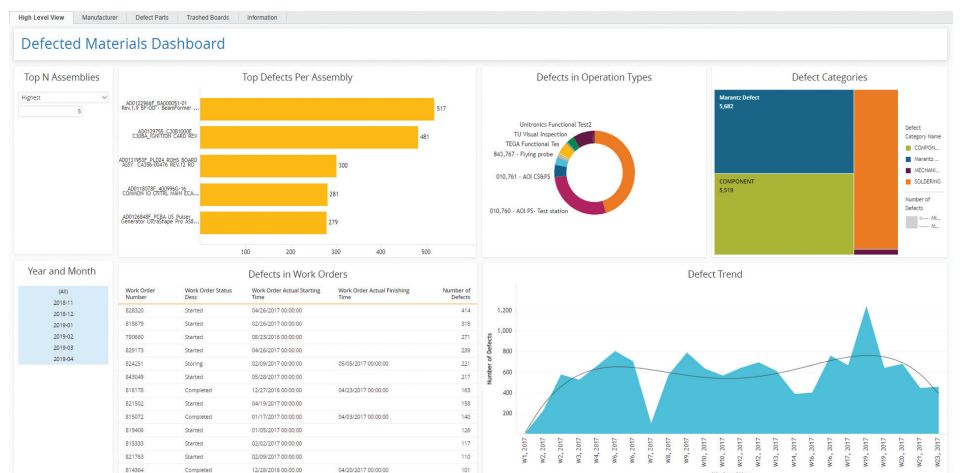
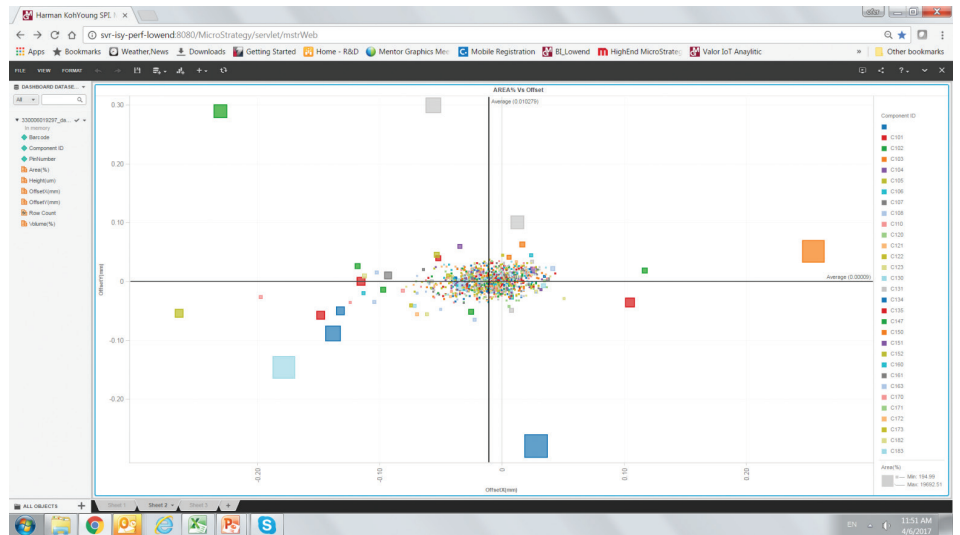
Easily track a customer's work order as the production moves through the factory, and make sure you are meeting due dates with ease.



## Advanced Analytic Capabilities

Valor IoT Manufacturing Analytics leverages an advanced Microstrategy analytic platform to provide a sophisticated, yet simple way to generate and analyze large amounts of data as quickly as a blink of an eye. When drilling for insights, you get an intuitive display of results using graphs and detailed text listings of search results. Individual rows can be selected for further investigation and analysis. Each drill down brings you closer to truly understanding the data connections.

- **Global Sharing** — All reports and dashboards can be saved and shared with others. Now everyone, from suppliers and manufacturer managers to the engineering and customer service, can use intelligence to improve products and performance.
- **Secure Supplier** — Valor IoT Manufacturing Analytics provides a secure supplier access, allowing OEMs to have visibility into all manufacturing data, WIP traceability, and quality results.
- **Enterprise Solution** — A multi-site data collection and consolidation option is available, with corporate-level reporting and site drill-down capabilities.



Valor IoT Manufacturing Analytics leverages an advanced Micro-strategy analytic platform to provide users with a sophisticated, yet simple way to generate and analyze large amounts of data as quickly.



